

SAFE PEOPLE FLOW[®] FOR HORIZONTAL SPEED



SAFE PEOPLE FLOW® FOR HORIZONTAL SPEED

The KONE TransitMaster™ 165 is a horizontal autowalk designed in particular for airports and busy hubs, where people need to move quickly and conveniently between different areas in order to arrive to their destination faster.

Applications	Public transportation, mainly airports
Environment	Indoor
Lenght	20–100 m
Inclination	0–6°
Group Arrangement	Single / Parallel in same running direction / Parallel in opposite running direction
Pallet width	1000 mm / 1200 mm / 1400 mm
Speed	0.5 / 0.65 / 0.75 m/s
Truss deflection	1/1000 and 1/1500
Gearbox type	Worm gear (88% efficiency) Helical gear (92% efficiency)
Drive location	Outside pallet band
Pallet chain type	Inside roller Ø75 x 23.5 mm
Controller	KONE 501B
Power supply	50Hz / 380V / 220V 50Hz / 400V / 230V 50Hz / 415V / 240V 60Hz / 380V / 110V 60Hz / 220V / 110V
Operation mode	Standby speed Standby speed and/or automatic start/stop
Code compliance	EN115-1: 2008 +A1:2010/EN115-1: 2017/GB16899-2011/Local Codes (Australia /Taiwan/Russia/UK)





KEY SPECIFICATIONS

Symmetric
designTravel length
20–100 mPallet width
1000 / 1200 /
1400 mmIndoor
environmentSpeed
0.5 / 0.65 / 0.75 m/sPeople Flow Capacity
up to 6600 people/h

Front plate	Black plastic
	Stainless steel
Balustrade	Safety Glass panels 10 mm
	Balustrade height: 1000 mm
Decking	Brushed satin stainless steel
	Silver powder-coated carbon steel (RAL9007)
	Natural anodized aluminum
Skirt	Black sheet steel
	Stainless steel
Access cover	Ribbed aluminum with black grooves
	Ribbed aluminum natural color
	Aluminum with black painted stainless steel surface
	Aluminum with stainless steel surface
Pallet	Silver painted aluminum (Grinded surface R10)
	Black painted aluminum (Grinded surface R10)
	Natural aluminum (Grinded surface R10)
Pallet demarcation	Without
	Yellow painted on 2 sides
Comb segment	Aluminum
	Aluminum with yellow coating (RAL 1023)
Handrail lighting	LED continuous light - white
	KONE Design Lighting – flexible and modifiable RGBW LED lights for every occasion
Skirt lighting	LED continuous light - white
	LED spot
	KONE Design Lighting – flexible and modifiable RGBW LED lights for every occasion

PEACE OF MIND WITH SAFETY

SKIRT PANELS

coated with anti-friction coating
minimize drag and reduce possibility
of entrapments between skirt and
pallets.

COMB PLATE IMPACT DEVICE SWITCHES

minimize the risk of entrapment in
comb plate areas.

KONE 24/7 CONNECTED SERVICES

helps you to see the status of the
autowalk in real time to ensure safe
operation.

ANTI SLIP REQUIREMENT

R10 anti-slip grade pallet surface
reduces the chance of passengers
slipping.

400 MM LONG PALLETS

increase the ride comfort of
passengers during their travel
experience.

FIRE SAFETY

maximised with halogen-free and fire-
resistant wiring.

EMERGENCY STOP BUTTONS

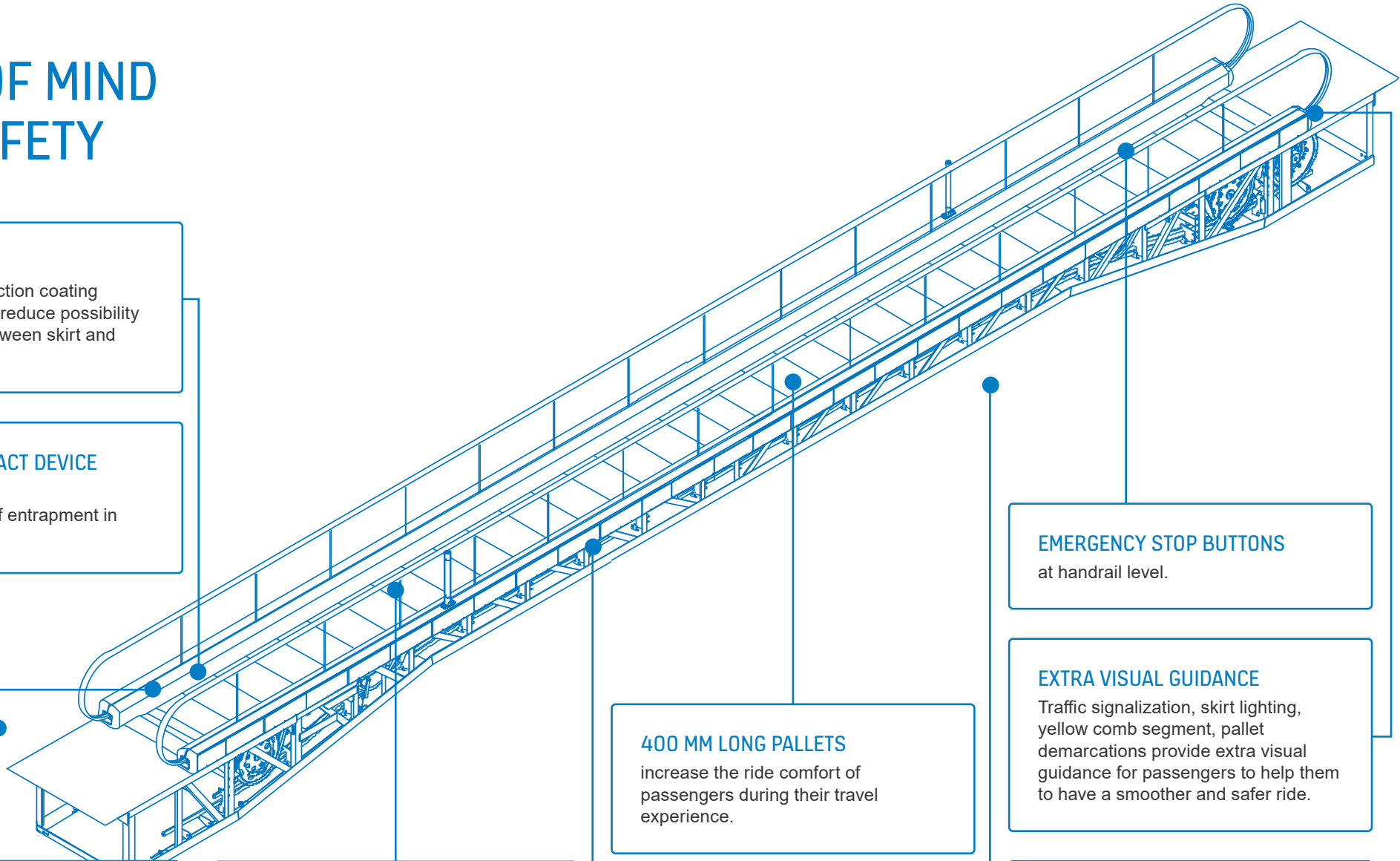
at handrail level.

EXTRA VISUAL GUIDANCE

Traffic signalization, skirt lighting,
yellow comb segment, pallet
demarcations provide extra visual
guidance for passengers to help them
to have a smoother and safer ride.

AUDIBLE ALARMS

provide clear guidance on autowalk
travel directions and enlarge users
attention.



AUTOWALK SUSTAINABILITY

Installing an eco-efficient KONE autowalk solution can help in achieving green building accreditations such as LEED or BREEAM certification.

BREEAM CERTIFICATION

One credit can be achieved by fulfilling the following requirement:

Autowalk is fitted with a passenger-sensing device for automated operation, so it operates in standby mode when there is no passenger demand.

LEED CERTIFICATION

KONE solutions can also contribute to several LEED certification categories.

ECO-EFFICIENT AUTOWALK

KONE TransitMaster™ 165 is able to achieve A+++ energy performance certificate based on ISO standard.

4 WAYS TO MAKE YOUR AUTOWALK MORE ECO-EFFICIENT:

- High efficiency motors minimize energy consumption at full speed
- Lubrication-free pallet chain means no oil, a cleaner autowalk and environment, reduced fire hazard, simpler cleaning and easier maintenance
- Long-lasting led lighting is up to 80% more efficient than fluorescent lighting and lasts up to 10 times longer
- Eco-efficient operational modes save energy by slowing down or stopping the autowalk completely when traffic is low. For example, when an autowalk is empty, energy consumption is further reduced by slow stand-by speed and furthermore by stopping the autowalk

KONE holds the EcoVadis Gold medal for its sustainability performance, being in the top 3% of all the assessed companies. The **EcoVadis** rating covers a broad range of non-financial management systems including environmental, labor and human rights, ethics, and sustainable procurement impacts.

KONE has been recognized by CDP for its actions towards reducing emissions, mitigating climate risks, and developing a low-carbon economy. KONE achieved a place on **CDP's prestigious A List** signifying that we rank among a small number of high performers.

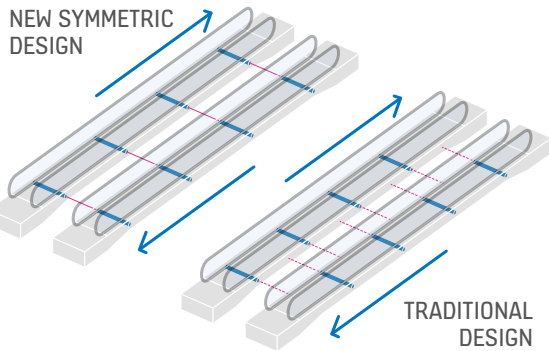
KONE has been recognized as one of the best employers in the world by Forbes business magazine on their **Forbes 2022 World's Best Employers list**.



HIGH QUALITY DESIGN TO MATCH YOUR BUILDING REQUIREMENTS

SYMMETRIC DESIGN

Symmetric design means that two parallel autowalks running in opposite directions have the same positions for intermediate supports. This saves your engineering time, installation time and costs of additional support beams.

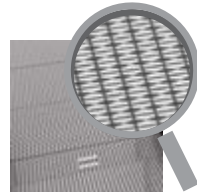


Structural elements and supports are aligned even if parallel autowalks are running in different directions.

ACCESS COVERS



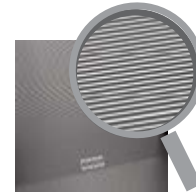
Aluminum with stainless steel surface



Aluminum with black painted stainless steel surface



Ribbed aluminum natural color



Ribbed aluminum with black grooves

SKIRTING

SKIRT



Brushed satin stainless steel skirt with clear anti-friction coating

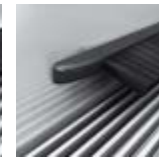


Sheet steel skirt with black anti-friction coating

SKIRT BRUSH HOLDER



Clear anodized aluminum

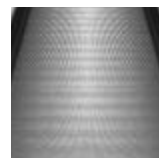


Black anodized aluminum

PALLETS



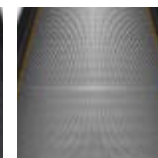
Natural aluminum



Silver painted aluminum

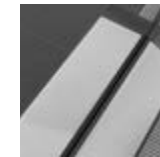


Black painted aluminum

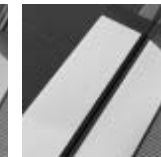


Yellow painted demarcation on two sides of pallet

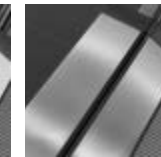
DECKING



Silver powder-coated carbon steel (RAL9007)

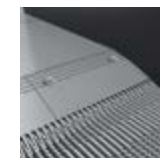


Natural anodized aluminum

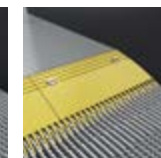


Brushed satin stainless steel

COMB



Aluminum comb segments



Aluminum comb segments with yellow coating

FRONT PLATE



Stainless Steel

Black plastic

BALUSTRADE



Glass balustrade up to 60 m autowalk length

Glass balustrade from 60 to 100 m autowalk length

ADDITIONAL OPTIONS



Additional emergency stop button

Diagnostic display

HANDRAILS



Black

Black with white demarcation inserts

Red

Blue



Green

Brown

Beige

Grey

LIGHTING

LED HANDRAIL LIGHTING (*for units with length less than 60 m)



White

KONE Design Lighting, handrail

LED SKIRT LIGHTING

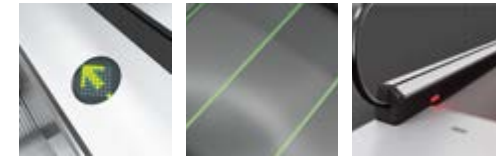


White

KONE Design Lighting, skirt lighting

LED skirt spot lighting (only in white)

ADDITIONAL LIGHTING



LED traffic lights located in the decking

Pallet demarcation lighting

LED comb lighting (available in white, yellow, red, blue, and green)

KONE provides innovative and eco-efficient solutions for elevators, escalators, automatic building doors and the systems that integrate them with today's intelligent buildings.

We support our customers every step of the way; from design, manufacturing and installation to maintenance and modernization. KONE is a global leader in helping our customers manage the smooth flow of people and goods throughout their buildings.

Our commitment to customers is present in all KONE solutions. This makes us a reliable partner throughout the life cycle of the building. We challenge the conventional wisdom of the industry. We are fast, flexible, and we have a well-deserved reputation as a technology leader, with such innovations as KONE MonoSpace® DX, KONE NanoSpace™ and KONE UltraRope®.

KONE employs close to 57,000 dedicated experts to serve you globally and locally.

UAE

Dubai (regional Office)

KONE Middle East LLC
U-Bora Tower,
C/O Al Abraj Str & Al Khaleej Str,
Business Bay.
P.O. Box 21474
Tel: +971 4 279 4500
www.kone.ae

Kingdom of Saudi Arabia

Riyadh (Head Office)

KONE Areeco Ltd
King Fahad Road,
Olaya District,
Al Hamad Tower, Floor 8.
Tel: +966 9200 17055
www.kone.sa

Egypt

KONE LLC
Plot no.10 B, Mohamed Naguib Axis,
Fifth Settlement,
O1 Mall, KONE 2nd Floor, New Cairo.
Tel: +20 232 44 300
www.kone.eg

Morocco

KONE Elevators and Escalators
SARLAU
Lot Marjana N6,
Sidi Maarouf, Casablanca.
P.O Box 20280
Tel: 0522 58 02 11
www.kone.ma

Qatar

KONE Elevators LLC
Ghanem Office Tower,
Building No. 54, Street No. 640,
Zone 23, Salwa Road,
Bin Mahmoud Area, Doha.
P.O. Box 37143
Tel: +974 4488 8835
www.kone.qa

Oman

KONE Assarain LLC
Hatat House B, Office 103, 1st Floor,
Wadi Adai, Ruwi 112, Muscat.
P.O. Box 1475
Tel: +968 246 570 00
www.kone.om

Bahrain

KONE Bahrain SPC
Building 767, Office number 61,
Road number: 3629,
Block number: 336,
Adliya, Kingdom of Bahrain.
P.O. Box 21303
Tel: +973 1774 9271
www.kone.bh

Kuwait

Laila Tower, 14th floor, office 3,
Salmiya, Kuwait.
P.O. Box 21119 - Safat 13072
www.kone.com.kw

Tunisia

Ensemble Mobilier Miniar,
Rue du Lac d'Ourmia,
1053 Les Berges du Lac,
Tunis, Tunisie.
www.kone.tn

East Africa (Kenya and Uganda)

KONE NAIROBI (Head Office)
Crowne Plaza Annexe, 13th Floor,
Along Kenya Road, Nairobi, Kenya.
P.O. Box 35174-00100
www.kone.co.ke
www.kone.ug

South Africa

KONE Elevators South Africa (Pty) Ltd,
20 Friesland Drive, Longmeadow,
Business Estate (South),
Edenvale 1610, Johannesburg.
Tel: +27 11 035 1800
www.kone.co.za

Türkiye

İçerenköy Mah. Değirmenyolu Cad.
No:28 Asiaofispark B Blok D:3 Kat:2
34752 Ataşehir/İstanbul.
Tel: 444 56 63
www.kone.com.tr

Kazakhstan

KONE Kazakhstan LLP
D.Konayev Street 12/1,
floor 9, 010017,
Astana, Kazakhstan.
www.kone.kz

This publication is for general informational purposes only and we reserve the right at any time to alter the product design and specifications. No statement this publication contains shall be construed as a warranty or condition, express or implied, as to any product, its fitness for any particular purpose, merchantability, quality or representation of the terms of any purchase agreement. Minor differences between printed and actual colors may exist.

KONE MonoSpace® DX, KONE EcoDisc®, KONE Care® and People Flow® are registered trademarks of KONE Corporation. Copyright © 2022 KONE Corporation.