

The main image shows three young people, two boys and one girl, standing together and looking at a smartphone held by the girl. They are all smiling and appear to be in a modern, brightly lit environment. The boy on the left has a backpack and a jacket slung over his shoulder. The boy in the middle is wearing a light-colored jacket with a yellow hood. The girl on the right is wearing a green jacket and has headphones around her neck. In the background, there is a large, colorful graphic of the same three people, suggesting a digital or virtual overlay. The overall scene conveys a sense of digital connectivity and modern lifestyle.

ENTER A NEW ERA OF DIGITALLY ENABLED PEOPLE FLOW

ELEVATOR FULL REPLACEMENT REDEFINED

Replacing your elevator is a solid investment that will deliver years of comfort and convenience for residents. In an increasingly digitalized world, everything is connected, and elevators are no exception. The KONE MonoSpace® DX for full replacement redefines the elevator experience with connectivity for improved people flow and a completely new and inspiring user experience.

DX stands for digital experience, because with the KONE MonoSpace® DX you can create an experience that really connects – on every level. It's an easily upgradable solution that enables the building to evolve and increases its value, lifetime and attractiveness.

What's more, because it is powered by the compact KONE EcoDisc®, the KONE MonoSpace DX frees up valuable building space by completely removing the need for a machine room. Contact your local KONE sales representative to find out more.

KEY SPECIFICATIONS



API ready



Connected



Max. load capacity
2,500 kg



Max. speed
2.5 m/s



Max. travel
120 m



Max. floors
48



Max. persons
33



Max. group size
6



1

Get connected for smooth people flow

With connectivity and KONE application programming interfaces (APIs) you can make your elevator smarter and more desirable with new people flow solutions and value-adding services from KONE and our partners. By installing a connected elevator you can both optimize people flow and operational efficiency and make sure your property is ready to take advantage of future smart-building technologies.

2

Redefine the user experience

With real-time information for passengers, an engaging multisensory user experience, and other smart building applications, you can redefine elevator rides in your building and improve everyday convenience with enhanced accessibility and equipment availability.

3

Plan for success with KONE as your partner

As your experienced partner for smarter buildings, we can help you manage your property more efficiently with valuable insights into end-user behavior that can be used to continuously optimize people flow and improve the user experience.

Easy to upgrade

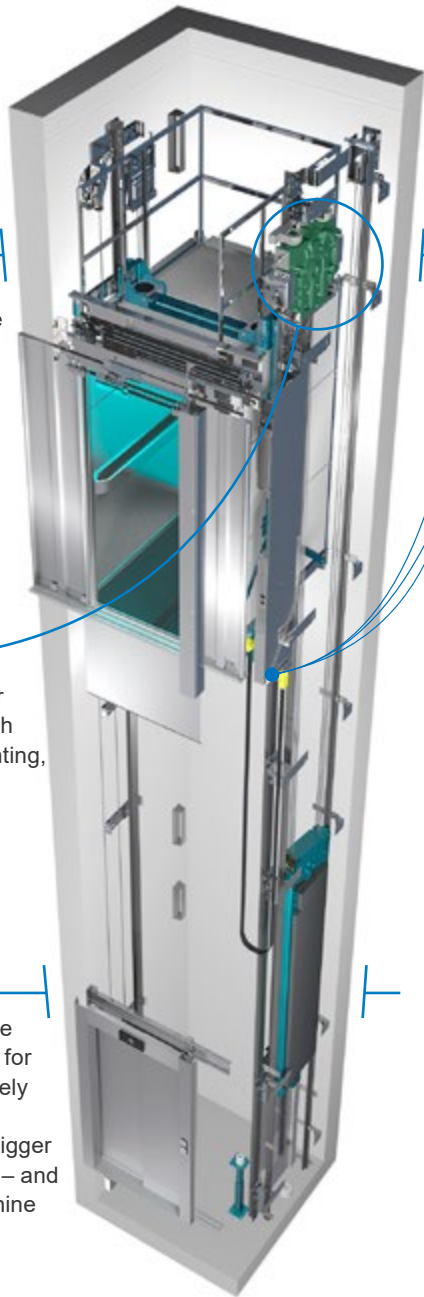
With easy digital integration and the possibility to upgrade in the future as your needs change, you're all set to add new connected services whenever you need them.

Best-in-class eco-efficiency

Save energy and reduce your building's carbon footprint with our eco-efficient hoisting, lighting, and standby solutions.

Space efficiency

Installing everything inside the elevator shaft frees up space for more profitable use. Completely replacing your elevator can improve accessibility with a bigger car and wider-opening doors – and allow you to reclaim the machine room as rentable floor space.



FUTURE-PROOF YOUR BUILDING WITH CONNECTIVITY

The KONE MonoSpace® DX takes our market-leading eco-efficient elevators and adds connectivity to make them smarter – optimizing goods and people flow, and increasing operational efficiency.

Connected people flow means your elevator solution never stands still, it's easy to upgrade – evolving with your building, adding value, and increasing the attractiveness of the property to prospective tenants.

To bring you peace of mind in the digital world, cybersecurity and privacy are designed into our digital services and connections. Monitoring our digital environments around the clock helps us take proper care of them for you now and in the future.



GET MORE VALUE OUT OF EVERY SQUARE METER WITH CONNECTIVITY

In an increasingly connected world, people expect more from the spaces where they live and work. Smart solutions based on connected digital technologies not only help buildings attract a premium price, they also help to speed up the sales or leasing process.

Connectivity enables services such as integrating elevator status data with the building's management system for effortless and more holistic monitoring and troubleshooting, or allowing people to make elevator calls using their smartphones or via other devices such as in-home intercoms.

ADD INNOVATIVE SERVICES THAT IMPROVE CONVENIENCE AND COMFORT

KONE MonoSpace® DX utilizes the KONE digital platform and secure APIs to connect elevators with a whole new suite of solutions and services that make life easier and more convenient for users.

Take advantage of digital solutions continuously developed by KONE to improve people flow like KONE 24/7 Connected Services for peace of mind throughout the elevator life cycle.

With KONE APIs you also have the freedom to develop your own smart building solutions, allowing you to further customize the elevator experience to meet the needs of your building and its users.

You can also benefit from solutions and services developed by the growing number of partners of the KONE Partner Ecosystem, which develops solutions that can be integrated with KONE DX Class elevators.

REDEFINE THE USER EXPERIENCE FOR TENANTS AND VISITORS

With KONE MonoSpace® DX Class elevators you can harness the power of digitalization to create an exciting, multisensory user experience. A whole new range of car designs, material options, lighting and signalization choices – as well as customizable digital infotainment solutions and health and well-being solutions contribute to a safe environment.



FUNCTIONAL, DURABLE MATERIALS

Design a car interior that's easier than ever to clean, maintain, and keep looking its best with our new range of innovative materials, including finishes with anti-fingerprint properties.

IMPACTFUL LIGHTING

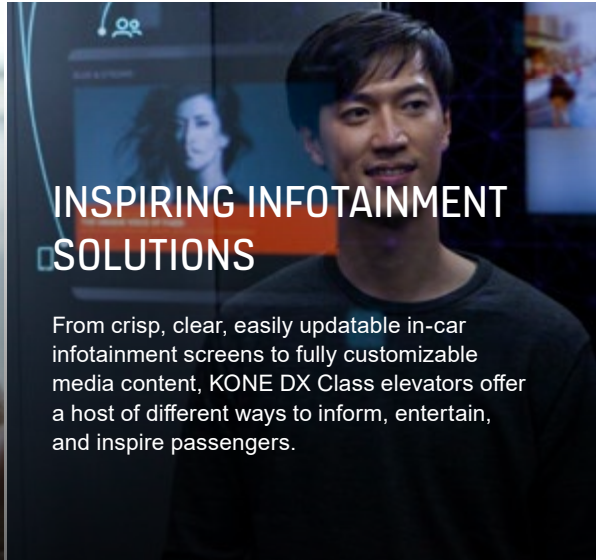
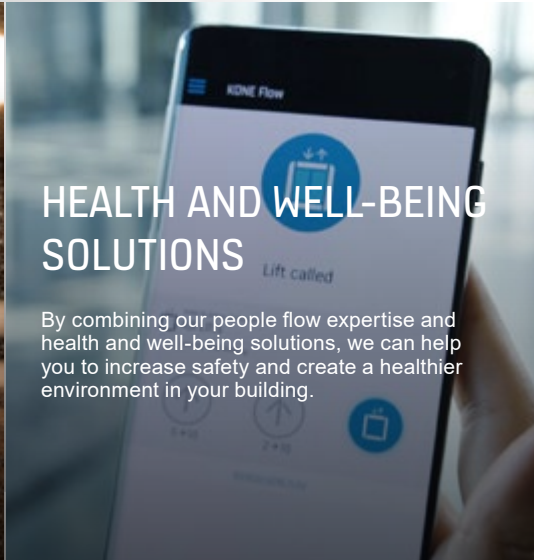
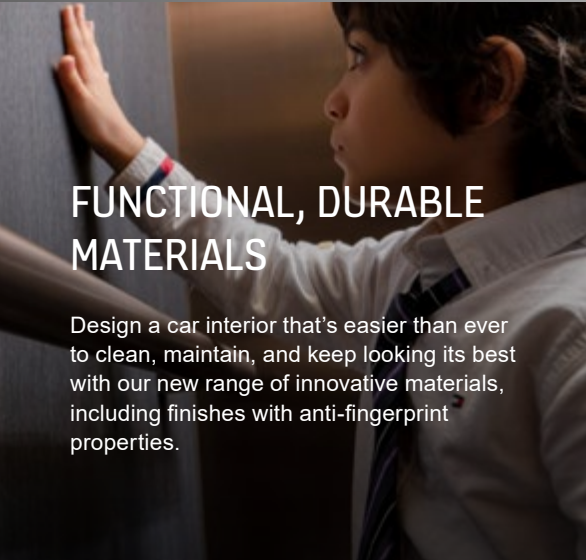
Create just the right ambience with impactful lighting. Our new range includes diffused, direct, and indirect lighting that can be combined to stunning effect.

HEALTH AND WELL-BEING SOLUTIONS

By combining our people flow expertise and health and well-being solutions, we can help you to increase safety and create a healthier environment in your building.

INSPIRING INFOTAINMENT SOLUTIONS

From crisp, clear, easily updatable in-car infotainment screens to fully customizable media content, KONE DX Class elevators offer a host of different ways to inform, entertain, and inspire passengers.



HUMAN INSIGHT-DRIVEN DESIGN

People are the lifeblood of buildings, so our design philosophy is based on a human insight-driven approach that takes the whole elevator journey into account to make sure it connects on every level – from the visual to the emotional, and everything in between.



reddot winner 2020



NATURAL WELLNESS
Create a calm, relaxing space



CREATIVE LIFE
Energize and inspire



MODERN HERITAGE
Craft a timeless classic



PLAN FOR SUCCESS WITH KONE AS YOUR PARTNER

Continuously optimize people flow and improve the user experience in your building with the assistance of an experienced partner. We can help you make your building smarter and more efficient with valuable insights based on a holistic view of end-user behavior and people flow.

We work with an ecosystem of partners to provide new services and solutions, and through our People Flow Planning and Consulting service we can ensure that everyone is able to move smoothly and safely around your building. We can also help you make better investment planning decisions based on solid data, and provide sustainable technologies, materials, and services that contribute to credits and certifications for green-building accreditation schemes.

UPGRADE WITHOUT THE HASSLE

On time and on budget, with no surprises and no unexpected costs – that's our promise. We take care of everything, from planning the project to installing your new elevator. We'll also provide technical and safety information and training when we hand it over to you, as well as provide support with any third-party inspections required. We can also make sure your elevator operates reliably and safely for its entire lifespan with a customized KONE Care™ preventive maintenance package.

FOUR EASY STEPS TO AN UPGRADED ELEVATOR



1 Fact-finding

- We'll carry out a detailed site survey to learn more about what kinds of upgrades would be best for your elevator and building.
- As part of this process we'll talk to the building owner and residents to find out what they want to get out of the project.



2 Recommendation and estimate

- You'll get a clear recommendation about what to upgrade based on your needs and our expert opinion.
- We'll provide a detailed schedule and cost breakdown so you know what to budget and how long the project will take.



3 Execution

- Once the project is under way a KONE project manager will be responsible for quality checks and supervision throughout the process.
- We'll keep everyone fully informed about the schedule and progress of the work via KONE InfoMod information boards in the lobby.



4 Ongoing maintenance and care

- We can create a tailored KONE Care™ maintenance plan for your equipment to keep it running safely and smoothly.
- With KONE 24/7 Connected Services we can monitor your equipment around the clock and take proactive action to prevent potential problems from causing a breakdown.

KONE provides innovative and eco-efficient solutions for elevators, escalators, automatic building doors and the systems that integrate them with today's intelligent buildings.

We support our customers every step of the way; from design, manufacturing and installation to maintenance and modernization. KONE is a global leader in helping our customers manage the smooth flow of people and goods throughout their buildings.

Our commitment to customers is present in all KONE solutions. This makes us a reliable partner throughout the life cycle of the building. We challenge the conventional wisdom of the industry. We are fast, flexible, and we have a well-deserved reputation as a technology leader, with such innovations as KONE MonoSpace® DX, KONE NanoSpace™ and KONE UltraRope®.

KONE employs close to 57,000 dedicated experts to serve you globally and locally.

UAE

Dubai (regional Office)

KONE Middle East LLC
U-Bora Tower,
C/O Al Abraj Str & Al Khaleej Str,
Business Bay.
P.O. Box 21474
Tel: +971 4 279 4500
www.kone.ae

Kingdom of Saudi Arabia

Riyadh (Head Office)

KONE Areeco Ltd
King Fahad Road,
Olaya District,
Al Hamad Tower, Floor 8.
Tel: +966 9200 17055
www.kone.sa

Egypt

KONE LLC
Plot no.10 B, Mohamed Naguib Axis,
Fifth Settlement,
O1 Mall, KONE 2nd Floor, New Cairo.
Tel: +20 232 44 300
www.kone.eg

Morocco

KONE Elevators and Escalators
SARLAU
Lot Marjana N6,
Sidi Maarouf, Casablanca.
P.O Box 20280
Tel: 0522 58 02 11
www.kone.ma

Qatar

KONE Elevators LLC
Ghanem Office Tower,
Building No. 54, Street No. 640,
Zone 23, Salwa Road,
Bin Mahmoud Area, Doha.
P.O. Box 37143
Tel: +974 4488 8835
www.kone.qa

Oman

KONE Assarain LLC
Hatat House B, Office 103, 1st Floor,
Wadi Adai, Ruwi 112, Muscat.
P.O. Box 1475
Tel: +968 246 570 00
www.kone.om

Bahrain

KONE Bahrain SPC
Building 767, Office number 61,
Road number: 3629,
Block number: 336,
Adliya, Kingdom of Bahrain.
P.O. Box 21303
Tel: +973 1774 9271
www.kone.bh

Kuwait

Laila Tower, 14th floor, office 3,
Salmiya, Kuwait.
P.O. Box 21119 - Safat 13072
www.kone.com.kw

Tunisia

Ensemble Mobilier Miniar,
Rue du Lac d'Ourmia,
1053 Les Berges du Lac,
Tunis, Tunisie.
www.kone.tn

East Africa (Kenya and Uganda)

KONE NAIROBI (Head Office)
Crowne Plaza Annexe, 13th Floor,
Along Kenya Road, Nairobi, Kenya.
P.O. Box 35174-00100
www.kone.co.ke
www.kone.ug

South Africa

KONE Elevators South Africa (Pty) Ltd,
20 Friesland Drive, Longmeadow,
Business Estate (South),
Edenvale 1610, Johannesburg.
Tel: +27 11 035 1800
www.kone.co.za

Türkiye

İçerenköy Mah. Değirmenyolu Cad.
No:28 Asiaofispark B Blok D:3 Kat:2
34752 Ataşehir/İstanbul.
Tel: 444 56 63
www.kone.com.tr

Kazakhstan

KONE Kazakhstan LLP
D.Konayev Street 12/1,
floor 9, 010017,
Astana, Kazakhstan.
www.kone.kz

This publication is for general informational purposes only and we reserve the right at any time to alter the product design and specifications. No statement this publication contains shall be construed as a warranty or condition, express or implied, as to any product, its fitness for any particular purpose, merchantability, quality or representation of the terms of any purchase agreement. Minor differences between printed and actual colors may exist.

KONE MonoSpace® DX, KONE EcoDisc®, KONE Care® and People Flow® are registered trademarks of KONE Corporation. Copyright © 2022 KONE Corporation.